

April 29, 2020

Press Release

New brushless DC flat motors.

maxon release the new 45mm diameter brushless DC motors – EC 45 power up.

Brushless DC motors, also known as BLDC motors, come in many shapes and sizes. The new 45mm power up motor is commonly called a flat motor or an outrunner motor. Here in Australia they are often referred to as pancake motors. maxon, who are known as producers of DC motors with extreme power density, have managed to take this recognition even further with the new DC drive range. Flat motors with the same dimensions previously achieved power ratings of up to 70W however, with new cooled rotor designs, this power output has been dramatically increased to 120W. Three base versions are available with options on cooling, DC winding characteristics (KV), Cooling options (closed, open and forced), cable and connector versions, hall sensor and sensorless versions. Plus a range of encoders and gearheads to create a kit like system to build up a rotary actuator or servo system that specifically suits the application. Despite all motors having 18V, 24V, 36V and 48V there is no strict adherence to these levels required. With the need for ever increasing power levels from a set envelope of space. Engineers and machine builders regularly used these motors in overdrive. For example; the 24V 120W DC motor has a nominal speed of 4520 rpm. Using this motor with a brushless motor servoamplifier and a system voltage of 48V the motor can comfortably achieve 10,000rpm. The DC motors are available for order online now and also configurable for bespoke applications with the help of maxon motor Australia application engineers.

maxon motor Australia tel. +61 2 9457 7477.

Length of this update: 278 words

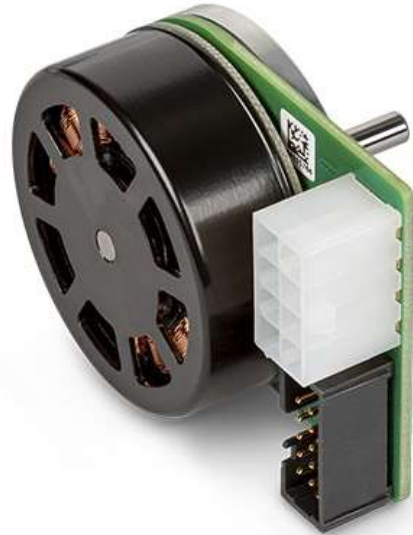
The press release is available on the internet at: www.maxongroup.net.au



*Brushless Flat motor -
BLDC pancake.
© maxon Group*



*Brushless Flat motor -
BLDC pancake.
© maxon Group*



maxon motor Australia Pty Ltd
Unit 1, 12-14 Beaumont Road
Mt Kuring-Gai NSW 2080

Tel: +61 2 9457 7477
sales.au@maxongroup.com
www.maxongroup.net.au
Twitter @maxongroupAus

The Swiss specialist for quality drives

maxon is a developer and manufacturer of brushed and brushless DC motors, as well as gearheads, encoders, controllers, and entire mechatronic systems. maxon drives are used wherever the requirements are particularly high: in NASA's Mars rovers, in surgical power tools, in humanoid robots and in precision industrial applications, for example. To maintain its leadership in this demanding market, the company invests a considerable share of its annual revenue in research and development. Worldwide, maxon has more than 3000 employees at nine production sites and is represented by sales companies in more than 30 countries.