

March 26, 2020

Press Release

New product combinations of brushless DC motors and right angle gearboxes.

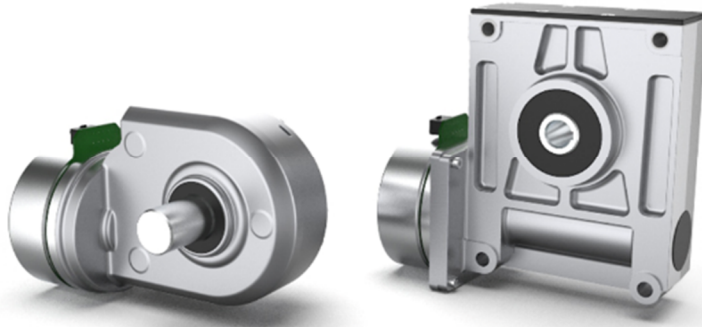
Since the acquisition of Parvalux Electric motors, maxon have released some unique combinations utilising maxon brushless DC motors and Parvalux quality right angle gearboxes.

maxon motors latest release of 90mm diameter brushless DC flat motors saw power ratings of the motor increase to 600W from a motor with a body length of just under 40mm. There are now six power ratings for the 90mm brushless flat motors, otherwise known as pancake motors. There are also 12V, 24V, 36V, 48V and 60V DC windings for selectable speed and torque characteristics. Combining this versatility and power density with selectable ratios of spur + worm combination gearheads (notably the Parvalux GB14 and GB9 series), allows machine builders to specify the exact speed and torque requirements for the application. Parvalux have a very flexible approach to gearhead manufacturing with the ability to manufacture bespoke solutions for each application. Everything from the shaft diameter, length and shape to hollow shaft and dual shaft solutions can be manufactured to customer needs. The right angle gearheads can be self locking in nature and with the box-like form factor when fitted with a flat motor, makes them particularly suitable for robotic joints and many other load bearing and articulating functions. The addition of brake and encoder accessories also make them suitable for safety hoist and winch functions where space is limited and high torque is required.

maxon motor Australia tel. +61 2 9457 7477.

Length of this update: 247 words

The press release is available on the internet at: www.maxongroup.net.au



*maxon brushless DC flat
motors with Parvalux
right angle gearheads.
© maxon Group*

maxon motor Australia Pty Ltd
Unit 1, 12-14 Beaumont Road
Mt Kuring-Gai NSW 2080

Tel: +61 2 9457 7477
sales.au@maxongroup.com
www.maxongroup.net.au
Twitter @maxongroupAus

The Swiss specialist for quality drives

maxon is a developer and manufacturer of brushed and brushless DC motors, as well as gearheads, encoders, controllers, and entire mechatronic systems. maxon drives are used wherever the requirements are particularly high: in NASA's Mars rovers, in surgical power tools, in humanoid robots and in precision industrial applications, for example. To maintain its leadership in this demanding market, the company invests a considerable share of its annual revenue in research and development. Worldwide, maxon has more than 3000 employees at nine production sites and is represented by sales companies in more than 30 countries.